

BYRD LIKE

G-BLUES

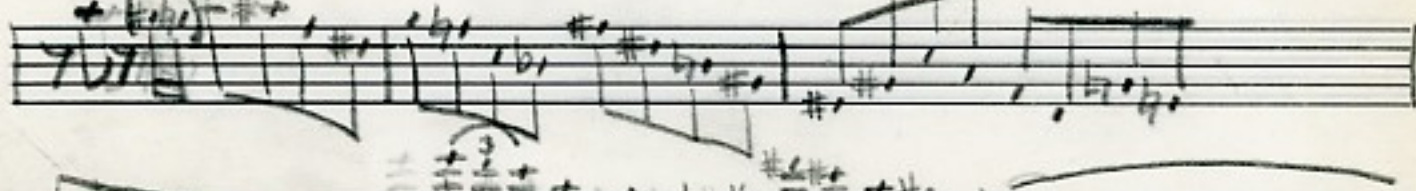
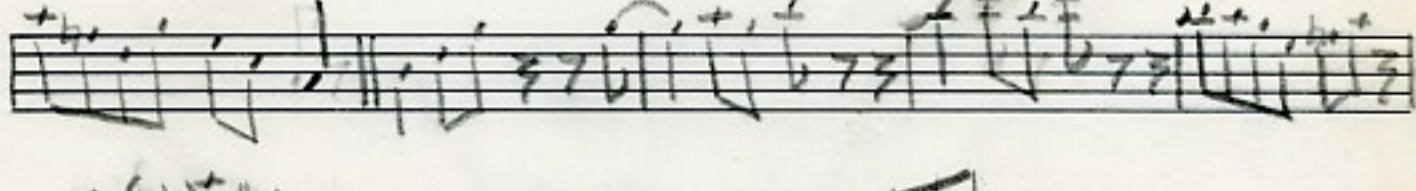
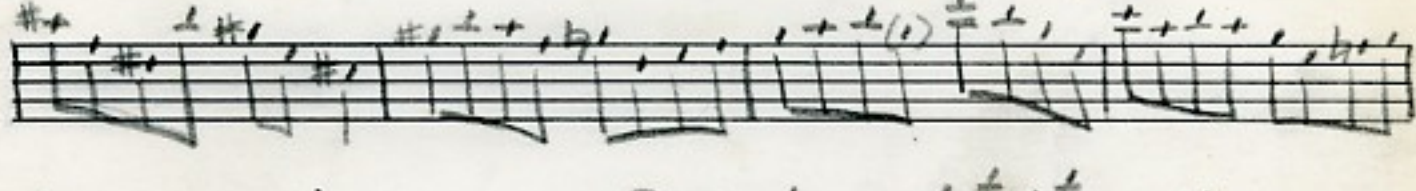
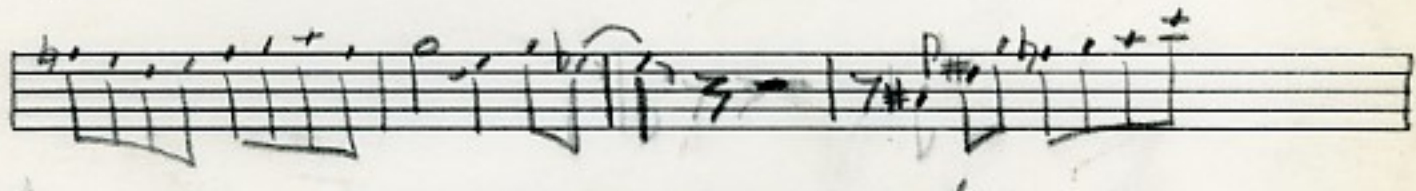
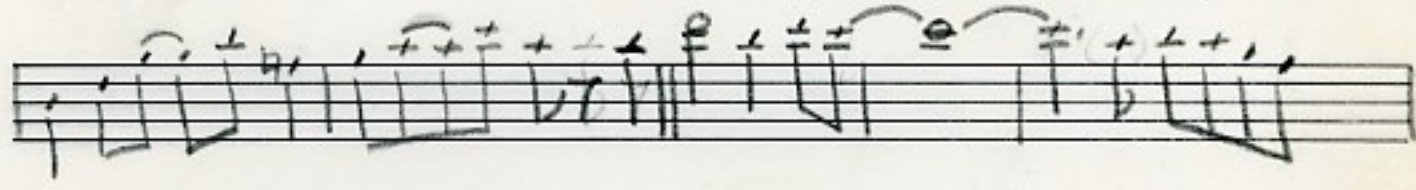
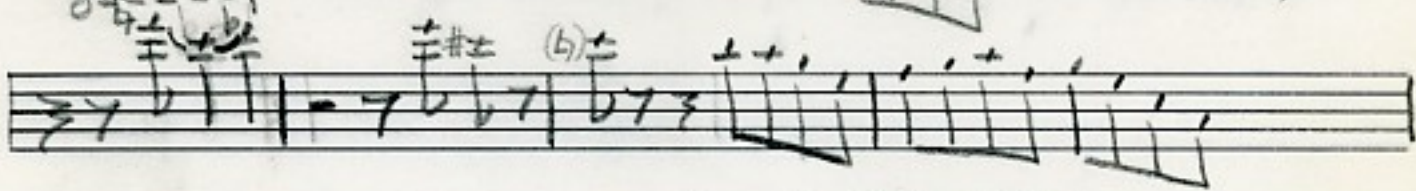
ERDIE WATTS
TENOR SOLO

\$2.25

FAST BEBOP

Handwritten musical score for tenor saxophone solo in G-blues style. The score consists of ten staves of music in 4/4 time. It features various musical notations including eighth and sixteenth notes, rests, and accidentals. Above the first staff, there is a '2' and a 'SOLO' label with a plus sign. Above the third staff, there is a circled '3' and a 'rit.' marking. Above the seventh staff, there is a circled '12'. Above the eighth staff, there is a 'FLAT' label. The notation includes many plus signs (+) and minus signs (-) above notes, likely indicating fingerings or breath marks. The music is written on a single treble clef staff.

The image shows a handwritten musical score on ten staves. The notation is dense and includes various musical symbols such as notes, rests, accidentals (sharps, flats, naturals), and articulation marks. The score is organized into pairs of staves, with the upper staff of each pair containing a melodic line and the lower staff containing a bass line. The notation is somewhat idiosyncratic, with many notes beamed together and frequent use of accidentals. There are several annotations in the form of small circles and numbers (e.g., '3') placed above or below notes, possibly indicating fingerings or specific performance techniques. The handwriting is clear but shows signs of being a working draft or a personal manuscript.



Handwritten musical notation on ten staves, featuring various guitar techniques and annotations:

- Staff 1:** Starts with the annotation "LAY BACK". Includes triplets and various note values.
- Staff 2:** Continues the melodic line with various note values and accidentals.
- Staff 3:** Features a circled note and the annotation "P R".
- Staff 4:** Includes a triplet and the annotation "FLAT".
- Staff 5:** Continues the melodic line with various note values and accidentals.
- Staff 6:** Includes the annotation "BEND" above the staff.
- Staff 7:** Includes the annotation "BEND" above the staff.
- Staff 8:** Includes the annotation "BEND" above the staff.
- Staff 9:** Includes the annotation "BEND" above the staff.
- Staff 10:** Ends with the annotation "END SOLO".